



**N O R T H F A L L S**

*Offshore Wind Farm*

# **Onshore Substation Zone of Theoretical Visibility and Viewpoint Locations with Dedham Vale National Landscape**

Document Reference:	9.62
Volume:	9
Date:	April 2025
Revision:	0

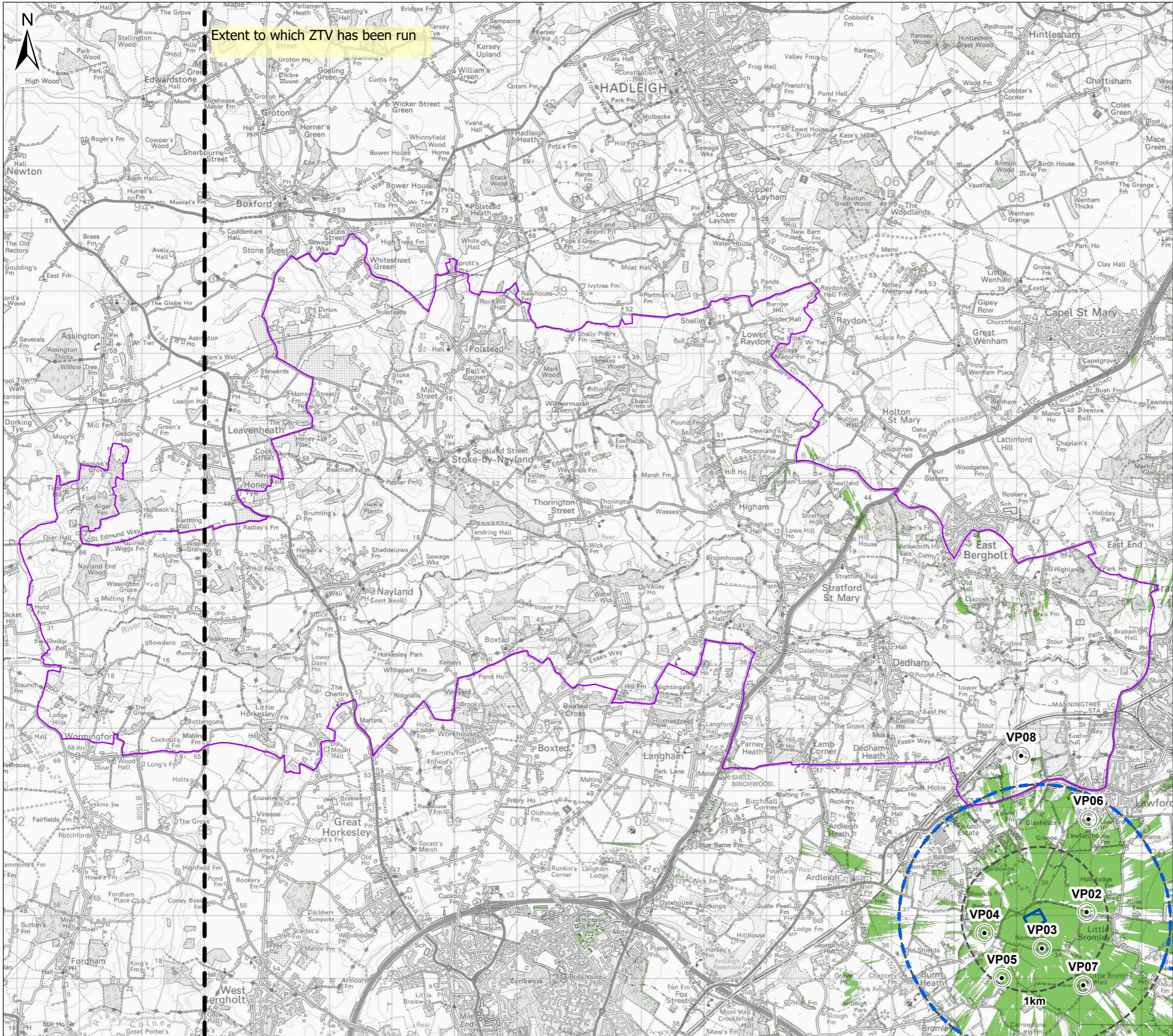
**Project Reference: EN010119**



<b>Project</b>	North Falls Offshore Wind Farm
<b>Document Title</b>	Onshore Substation Zone of Theoretical Visibility and Viewpoint Locations with Dedham Vale National Landscape
<b>Document Reference</b>	9.62
<b>Supplier</b>	LUC
<b>Supplier Document ID</b>	PB9244-LUC-ZZ-ON-DR-GS-0041

This document and any information therein are confidential property of North Falls Offshore Wind Farm Limited and without infringement neither the whole nor any extract may be disclosed, loaned, copied or used for manufacturing, provision of services or other purposes whatsoever without prior written consent of North Falls Offshore Wind Farm Limited, and no liability is accepted for loss or damage from any cause whatsoever from the use of the document. North Falls Offshore Wind Farm Limited retains the right to alter the document at any time unless a written statement to the contrary has been appended.

<b>Revision</b>	<b>Date</b>	<b>Status/Reason for Issue</b>	<b>Originator</b>	<b>Checked</b>	<b>Approved</b>
0	April 2025	Deadline 4	LUC	NFOW	NFOW



- Legend**
- Dedham Vale National Landscape
  - North Falls Substation Operational Footprint
  - LVIA Study Area
  - Substation Operational Footprint 1km Interval Buffer
  - Theoretical Visibility of Substation Components
  - Viewpoint
- VP02: Bridleway at Barn Lane  
VP03: Norman's Farm  
VP04: Little Bromley Road  
VP05: Public Right of Way near Lilley's Farm  
VP06: Grange Road  
VP07: Public Right of Way near Little Bromley Hall  
VP08: Essex Way, Dedham Road

**Notes**

The ZTV is calculated to a height of 18m (lightning masts) for the substation operational footprint, from a viewing height of 1.5m above ground level.

The digital surface model (DSM) used is LIDAR 1m (2022) data (obtained from DEFRA in December 2023). A DSM includes a surface model of trees, buildings and hedges. Earth curvature and atmospheric refraction have been taken into account. The ZTV was calculated using ArcGIS Pro 3.2 software.



Data Source: OS, LUC, RHDHV  
Drawing Title

**Onshore Substation Zone of Theoretical Visibility (18m in height) and Viewpoint Locations with Dedham Vale National Landscape**

Rev	Date	Remarks	Drwn	Chkd
01	10/11/2023	First issue	RW	JN

Drawing Number		Figure Number	
PB9244-LUC-ZZ-ON-DR-GS-0041		1	

Scale	Plot Size	Datum	Projection
1:62,000	A3	OSGB36	BNG





**NORTH FALLS**

*Offshore Wind Farm*



## **HARNESSING THE POWER OF NORTH SEA WIND**

*North Falls Offshore Wind Farm Limited*

*A joint venture company owned equally by SSE Renewables and RWE.*

*To contact please email [contact@northfallsoffshore.com](mailto:contact@northfallsoffshore.com)*

© 2024 All Rights Reserved